



Lawton Court | Oaks Crescent | Wolverhampton | WV3 9SH

£115,000

**Jackson**  
LIFE & CLOSE

## Key features



## Description

A particularly attractive second floor apartment



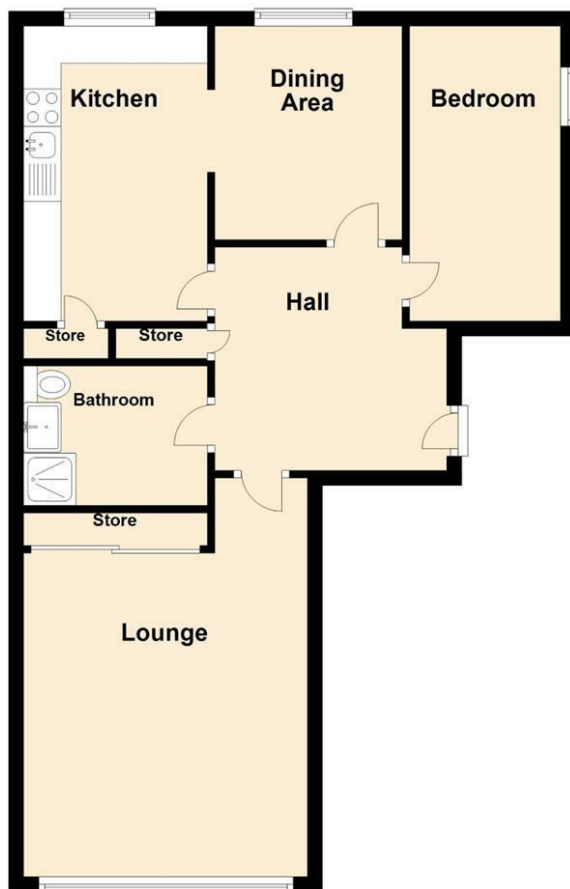
## Directions





**Ground Floor**

Approx. 33.7 sq. metres (362.9 sq. feet)



Total area: approx. 33.7 sq. metres (362.9 sq. feet)

Energy Efficiency Rating		
	Current	Potential
<i>Very energy efficient - lower running costs</i>		
(92 plus) <b>A</b>		
(81-91) <b>B</b>		
(69-80) <b>C</b>		
(55-68) <b>D</b>	<b>67</b>	<b>67</b>
(39-54) <b>E</b>		
(21-38) <b>F</b>		
(1-20) <b>G</b>		
<i>Not energy efficient - higher running costs</i>		
<b>England &amp; Wales</b>	EU Directive 2002/91/EC	



12 and 13 King Street  
 Wolverhampton  
 West Midlands  
 WV1 1ST  
 01902 712812

[jacksonlileclose@btconnect.com](mailto:jacksonlileclose@btconnect.com)  
<https://www.jacksonlileandclose.co.uk/#/>